

# Litchfield Public Library Summer Reading 2022

320-693-2483

www.litchfield.lib.mn.us

Full Name: \_\_\_\_\_

Phone: \_\_\_\_\_

Please write clearly.

## Directions:

1. Color in or mark off 1 shape for each item you complete. Some items may be done more than once.
2. Return this reading log to the Litchfield Public Library
3. You will earn 1 prize choice per completed sheet.
4. Prizes are available while supplies last.
5. You may complete as many sheets as you like throughout the summer reading program. Please be honest about the number of minutes you read and the activities you complete.



## Color in or mark off a shape for:

- \* READ for 20 minutes.  
*(up to 1 hour or 3 spots per day)*
- \* Read out loud to a buddy or a pet.  
*(1 spot per day)*
- \* Play a sport or do a physical activity for at least 20 minutes. *(1 spot per day)*
- \* Ask a librarian for a book recommendation. *(1 spot per day)*
- \* Have a healthy snack that includes at least 1 fruit or vegetable. *(1 spot per day)*
- \* Take a walk and observe things in nature. *(1 spot per day)*
- \* Attend an online or in-person library program. *(1 spot per day)*

## Bonus Prizes!

- \* There will be 1 bonus prize drawing at the end of each month during the summer reading program.
- \* Each reading log you return gets entered into a bonus prize drawing.
- \* Other activities like the monthly activity sheet will earn you an extra entry into the drawings.



Fill out this section to get your name added to a **Monthly Bonus Prize Drawing!**

Full Name: \_\_\_\_\_

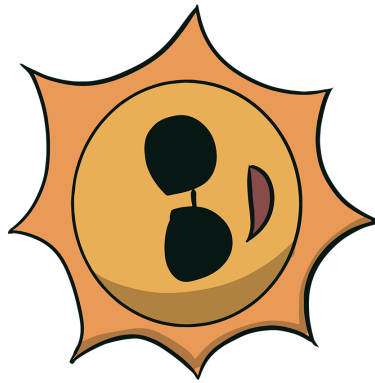
Phone: \_\_\_\_\_

Prizes will be drawn at the end of each month.

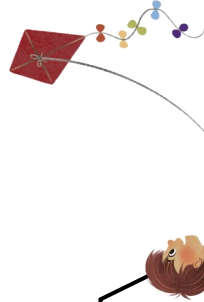
Winners will be contacted

when prizes are ready to be picked up.

# Read Beyond The Beaten Path



START



FINISH

